

NEP Construction Activities

Notice to Mariners

NtM Number: 028v01	Activity: Nearshore Dredging and Dredge Area Maintenance Campaign
Vessel Names: Afon Alaw, Puffin Island, Gunger R, Baugi R, Bjarke R, Toste R, Seafast Don.	Date of Issue: 13th March 2026
1 Planned Activity	
<p>Mariners are advised that the Northern Endurance Partnership (NEP) will be undertaking a nearshore dredging and dredge area maintenance campaign in the southern North Sea, utilising seven vessels. These vessels will be mobilising from the port of Hartlepool and working 24hrs a day.</p> <p>The scope will include removal and temporary storage of dredge material within the NEP Pipeline and Cable Construction Area Block 1. Relevant permissions in place are provided in Section 2</p> <p>The vessels are estimated to arrive on location on ~27 March 2026. Initial dredging activity is expected to take 71 ~ days to complete (weather dependant) and continued monitoring and maintenance of the dredge area will continue until pipelay activities begin. Updates will be issued via regular NEP Notice of Operations during the activity.</p> <p>Mariners are advised to maintain a safe distance (of at least 500m) from vessel locations at all times.</p> <p>For further information, contact details for the Fishing Industry Representative and the Company Fisheries Liaison Officer are provided in Section 7.</p>	
2 Permissions in Place	
Licencing Authority	Marine Licence Number
OPRED NEP Offshore Environmental Statement	D/4271/2021
OPRED Pipelines Screening Direction	PL/2543
3 Geographic co-ordinates and chart of the survey area	
See Figure 1 below for the survey overview and Table 1 for the coordinates (WGS84 DDM) of the Activity Area.	
4 Safe clearances, navigation safety features and safety notes for mariners	
All vessels are politely requested to maintain a safe distance (of at least 500m) from all construction vessels at all times.	
5 Outline programme of works	
Estimated Start Date: ~27th March 2026	Estimated Completion Date: ~6th June 2026

6 Vessel details

Vessel Name:	Afon Alaw
Vessel LOA(m):	25.5
Vessel Classification:	Tug
VHF Call Sign:	2FCZ7
MMSI:	235090202
Vessel Operator	Holyhead Towing Company



Vessel Name:	Puffin Island
Vessel LOA(m):	26
Vessel Classification:	Tug/Workboat
VHF Call Sign:	2BPK6
MMSI:	235068193
Vessel Operator	Holyhead Towing Company



Vessel Name:	Gungner R
Vessel LOA(m):	54
Vessel Classification:	Backhoe dredger
VHF Call Sign:	PCXB
MMSI:	24472300
Vessel Operator	rohde-nielsen



Vessel Name:	Baugi R
Vessel LOA(m):	48
Vessel Classification:	Hopper Barge
VHF Call Sign:	397189
MMSI:	NA
Vessel Operator	rohde-nielsen



Vessel Name:	Bjarke R
Vessel LOA(m):	48
Vessel Classification:	Hopper Barge
VHF Call Sign:	397190
MMSI:	NA
Vessel Operator	rohde-nielsen



Vessel Name:	Toste R
Vessel LOA(m):	45
Vessel Classification:	Hopper Dredger
VHF Call Sign:	OVPK
MMSI:	219000615
Vessel Operator	rohde-nielsen



Vessel Name:	Seafast Don
Vessel LOA(m):	23
Vessel Classification:	Workboat
VHF Call Sign:	MMMD6
MMSI:	232044406
Vessel Operator	Seafast Ltd



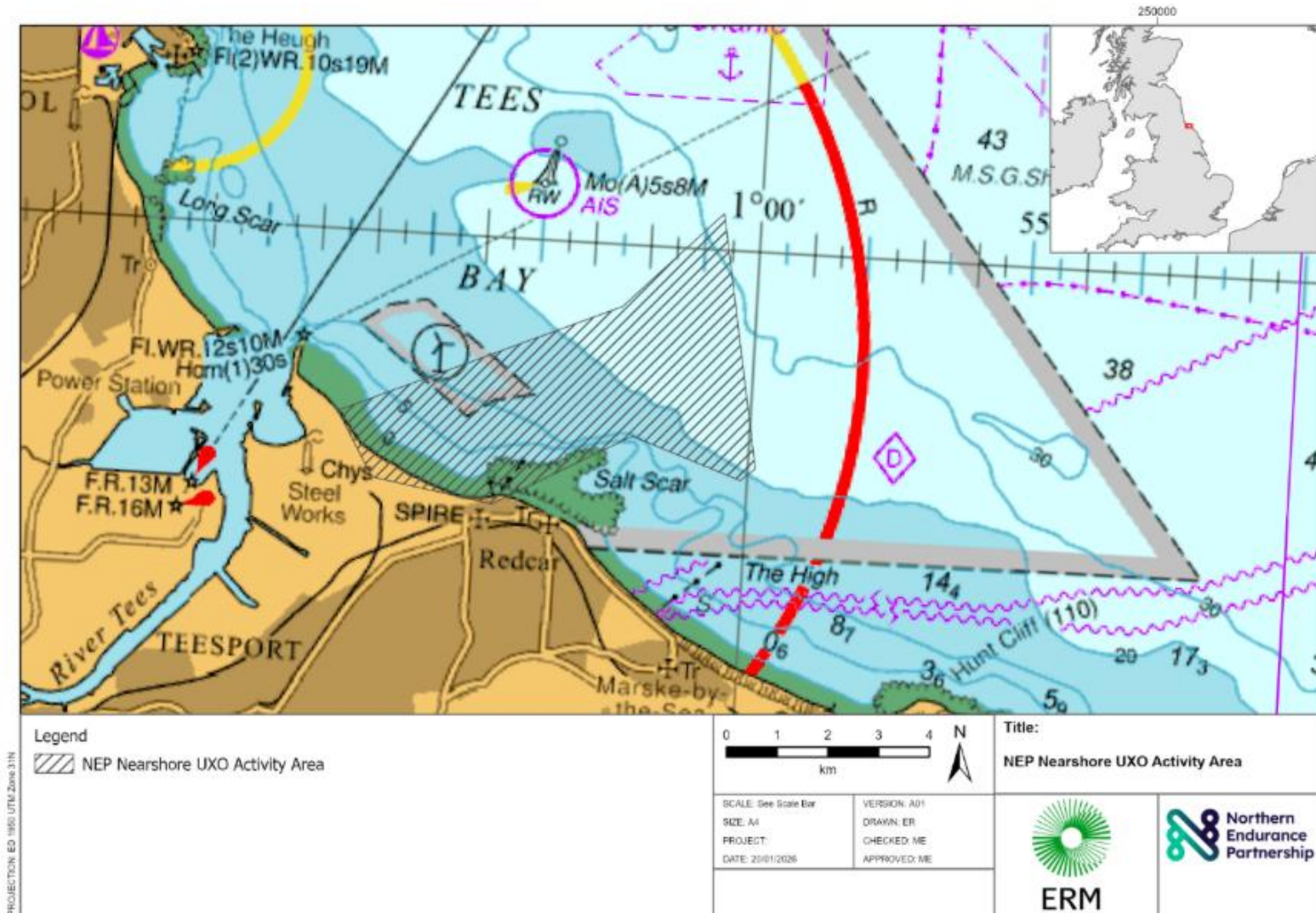
7 Contacts	
Company Fisheries Liaison Officers:	Fisheries Industry Contact:
Richard Joseph (ERM) Email: nep_cflo_erm@erm.com	John Armstrong (FIR) Email: juliekaren110@hotmail.co.uk
Holly Scott (ERM) Email: nep_cflo_erm@erm.com	

Table 1. NEP Pipeline and Cable Construction Area Block 1 Coordinates

Block 1

Latitude (WGS 84 DDM)	Longitude (WGS 84 DDM)
54°40.377'N	001°00.687'W
54°37.691'N	000°59.858'W
54°37.557'N	001°00.122'W
54°37.963'N	001°02.140'W
54°37.159'N	001°04.641'W
54°37.378'N	001°06.847'W
54°38.055'N	001°07.550'W
54°39.331'N	001°02.452'W

Figure 1. NEP Pipeline and Cable Construction Area Block 1



PROJECTION: ED 1983 UTM Zone 31N

SOURCE: World Topographic map, ESR, © Crown Copyright and/or database rights. Reproduced by permission of The Keeper of Public Records and the UK Hydrographic Office (www.gov.uk/13942).

Path: G:\8_Other\NEP\workspaces_2025\ER_working\Endurance_NEP_2025_NM.aprx / 04 - Endurance - NEP - Elyse NM - A4L - A01