

NEP – Surveys

Notice to Mariners

NtM Number: 021v03	NEP Offshore _Boulder Relocation Campaign_ NSea Pathfinder_ Campaign Postponement Notice
Date of Issue	28th January 2026
1 Planned Activity	
<p>The Northern Endurance Partnership (NEP) Boulder Relocation Campaign which was scheduled to be conducted by the vessel N-Sea Pathfinder ~ 29^h January 2026 has been postponed.</p> <p>Notice of mobilisation dates and vessel details will be shared within a new notice once details are secured.</p> <p>For further information, contact details for the Fishing Industry Representative and the Company Fisheries Liaison Officer are provided in Section 7.</p>	
2 Permissions in Place	
Licencing Authority	Marine Licence Number
Offshore Petroleum Regulator for Environment and Decommissioning (OPRED)	GS/1871
3 Geographic co-ordinates and chart of the survey area	
See Figure 1 below for the survey overview and Table 1 for the coordinates (WGS84 ddm) of the Survey Area.	
4 Safe clearances, navigation safety features and safety notes for mariners	
All vessels are politely requested to maintain a safe distance (of at least 500m) from the Nsea Pathfinder at all times.	
5 Outline programme of works	
Estimated Start Date: NA	Estimated Completion Date: NA

6 Vessel details

Vessel Name:	NSEA PATHFINDER
Vessel LOA(m):	61.87
Vessel Classification:	Multi Purpose Offshore Vessel
VHF Call Sign:	PBYN
MMSI:	245457000
Vessel Operator	N-Sea



7 Contacts

Company Fisheries Liaison Officers:

Richard Joseph (ERM)
Email: nep_cflo_erm@erm.com

Holly Scott (ERM)
Email: nep_cflo_erm@erm.com

Fisheries Industry Contact:

John Armstrong (FIR)
Email: juliekaren110@hotmail.co.uk

Figure 1. NEP Offshore Geophysical Survey Area

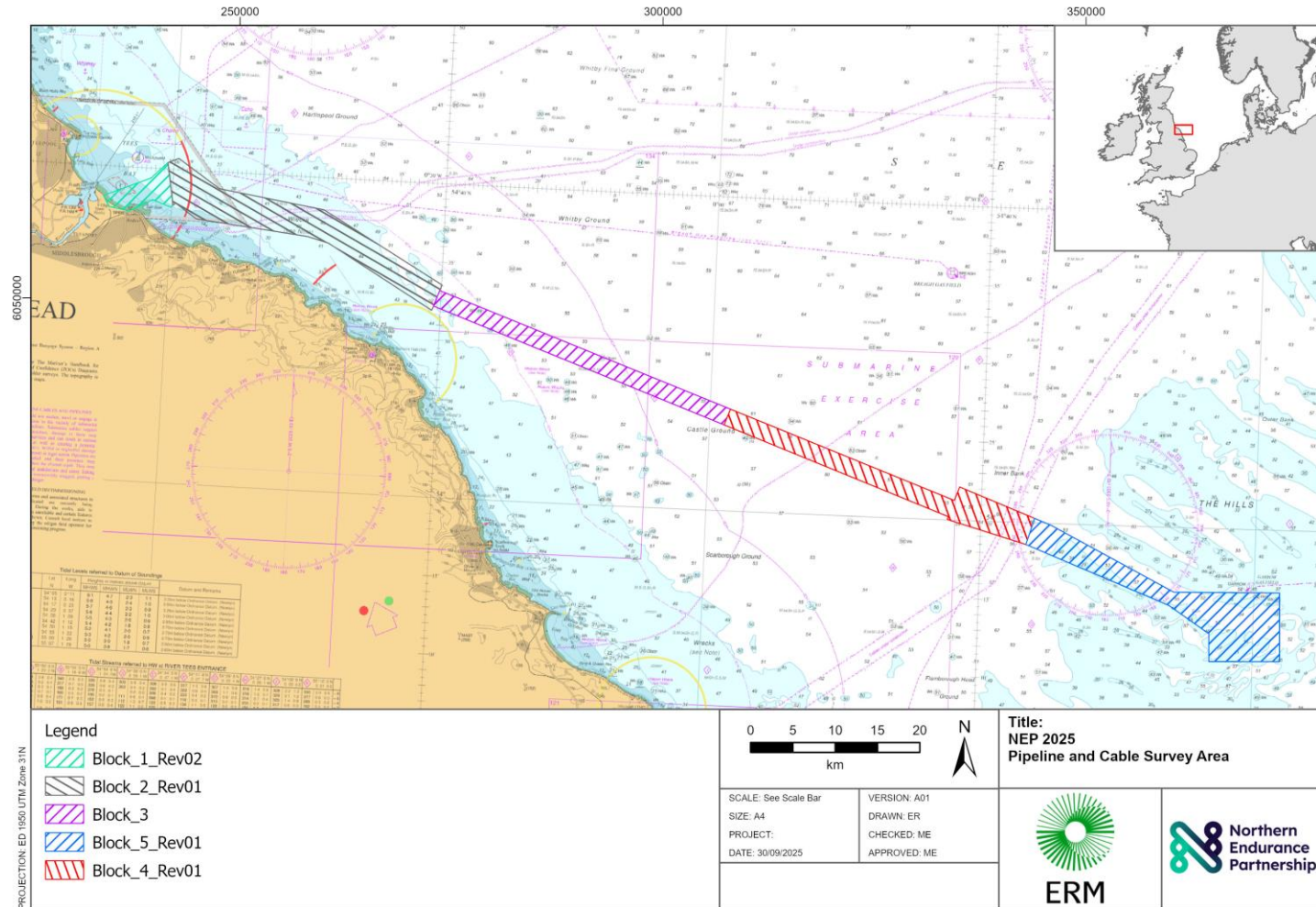


Table 1. NEP Pipeline and Cable Survey Area Coordinates

Block 1

Latitude (WGS 84 DDM)	Longitude (WGS 84 DDM)
54°40.377'N	001°00.687'W
54°37.691'N	000°59.858'W
54°37.557'N	001°00.122'W
54°37.963'N	001°02.140'W
54°37.159'N	001°04.641'W
54°37.378'N	001°06.847'W
54°38.055'N	001°07.550'W
54°39.331'N	001°02.452'W

Block 2

Latitude (WGS 84 DDM)	Longitude (WGS 84 DDM)
54°38.906'N	000°54.881'W
54°37.917'N	000°43.267'W
54°33.525'N	000°29.930'W
54°31.879'N	000°30.919'W
54°35.814'N	000°42.592'W
54°36.169'N	000°44.945'W
54°36.901'N	000°57.233'W
54°37.829'N	000°59.585'W
54°37.691'N	000°59.858'W
54°40.376'N	001°00.688'W
54°40.683'N	000°59.504'W

Block 3

Latitude (WGS 84 DDM)	Longitude (WGS 84 DDM)
54°33.162'N	000°30.148'W
54°26.464'N	000°02.235'E
54°25.446'N	000°01.606'E
54°32.159'N	000°30.750'W

Block 4

Latitude (WGS 84 DDM)	Longitude (WGS 84 DDM)
54°25.446'N	000°01.606'E
54°26.464'N	000°02.235'E
54°21.209'N	000°27.037'E
54°22.076'N	000°27.582'E
54°20.247'N	000°35.853'E
54°18.563'N	000°35.014'E
54°19.983'N	000°26.349'E
54°20.165'N	000°26.448'E

Block 5

Latitude (WGS 84 DDM)	Longitude (WGS 84 DDM)
54°18.563'N	000°35.014'E
54°20.247'N	000°35.853'E
54°19.846'N	000°37.661'E
54°15.828'N	000°51.286'E
54°15.970'N	001°02.794'E
54°11.597'N	001°03.000'E
54°11.472'N	000°55.312'E
54°13.250'N	000°55.222'E
54°14.975'N	000°50.780'E