



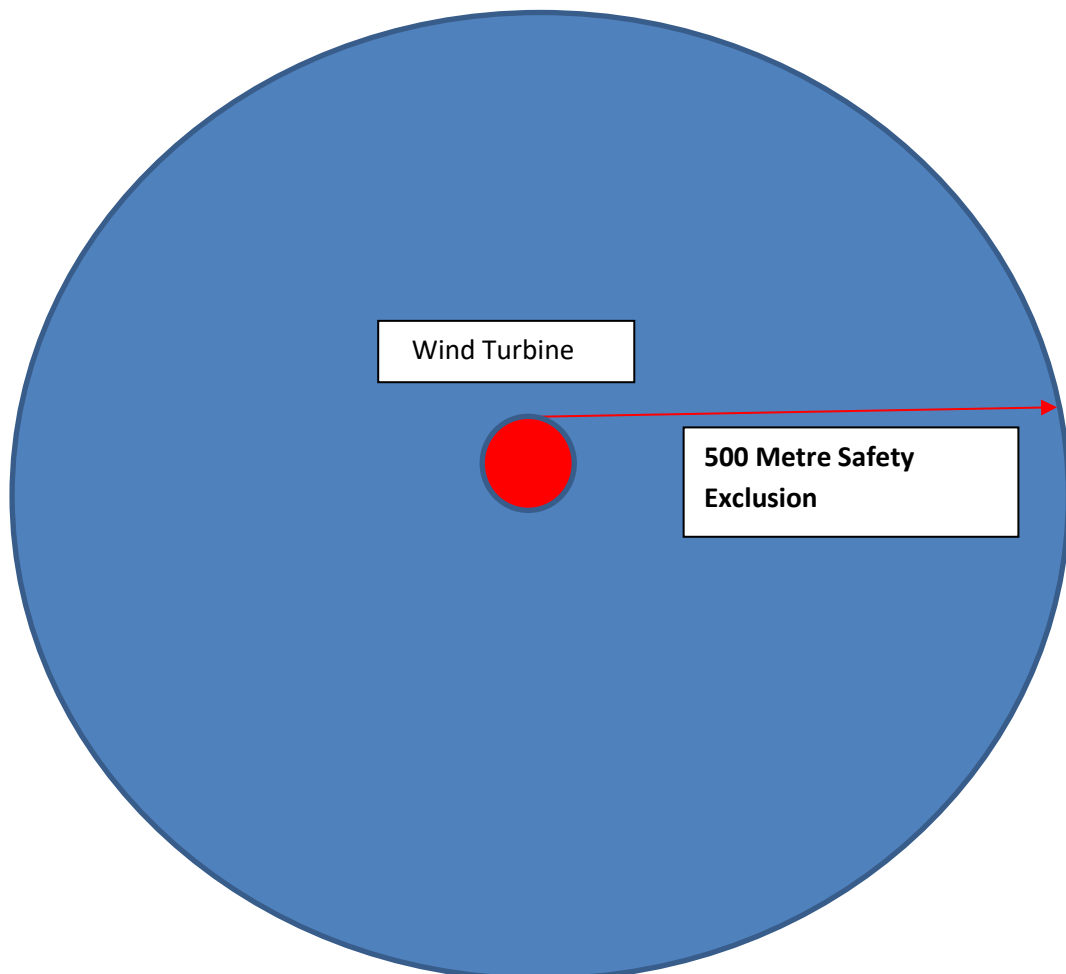
**Notice to Marine Users 2023**  
**Teesside Offshore Windfarm**  
**Important Notice to All Marine Users**

**27<sup>th</sup> November 2023**

**Planned Maintenance on wind turbines with jack-up vessel-‘WIND’**

Maintenance is planned to commence within the boundaries of the Teesside Offshore Wind Farm with the assistance of the ‘Wind’ jack-up vessel. The works will involve exchange of up to six existing gearbox at turbines 8A,09A,15B,17B,24C,27C. Anticipated duration of work for each turbine will take 6 to 8 days depending on the turbine status and weather conditions. **We plan for the works to commence on or around the 3rd December depending on weather conditions.**

**For safety reasons there will be a 500m exclusion zone around the radius of turbines and vessel shown below:**

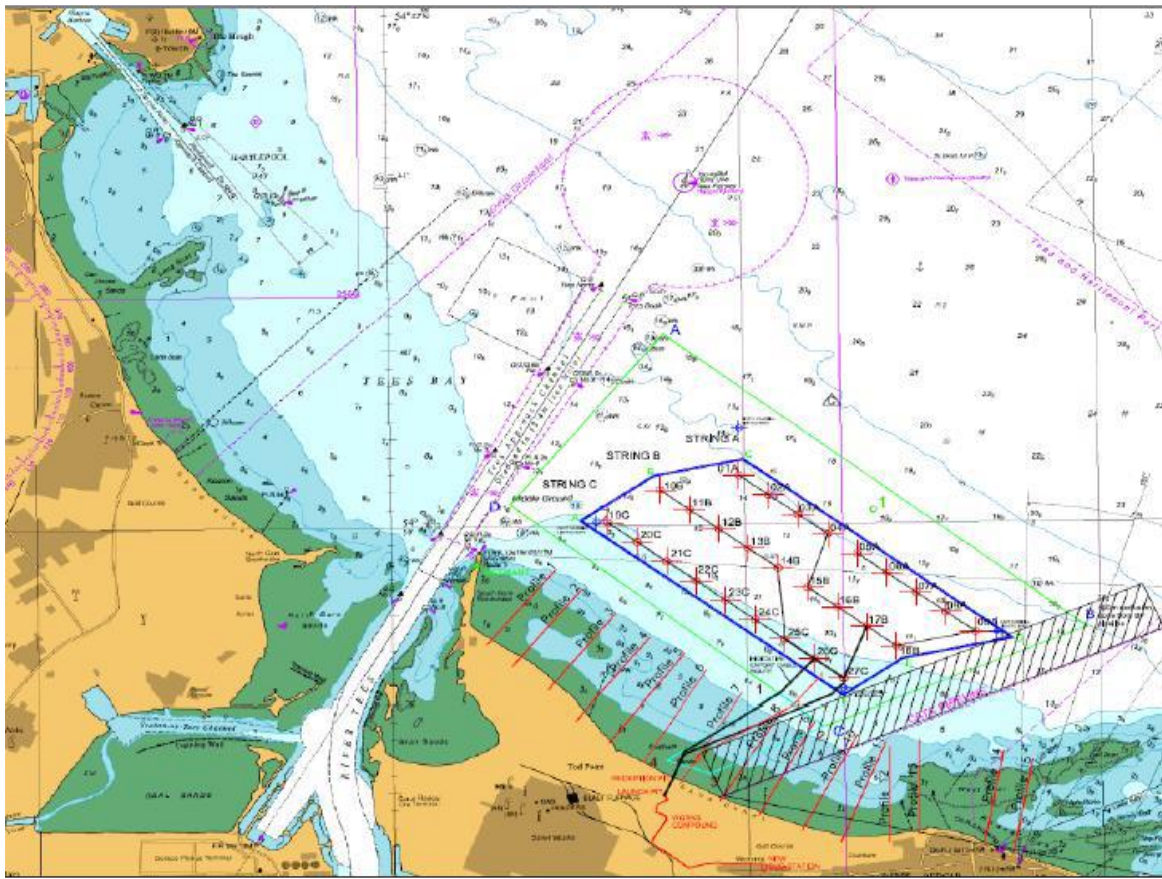


# Notice to Marine Users 2023 Teesside Offshore Wind Farm

27<sup>th</sup> November 2023

Turbines are located at the following coordinates:

WindTurbine Generator 8A	54° 38.49'	1° 4.30'
WindTurbine Generator 09A	54° 38.38'	1° 4.06'
WindTurbine Generator 15B	54° 38.64'	1° 5.47'
WindTurbine Generator 17B	54° 38.41'	1° 4.98'
WindTurbine Generator 24C	54° 38.46'	1° 5.92'
WindTurbine Generator 27C	54° 38.12'	1° 5.18'

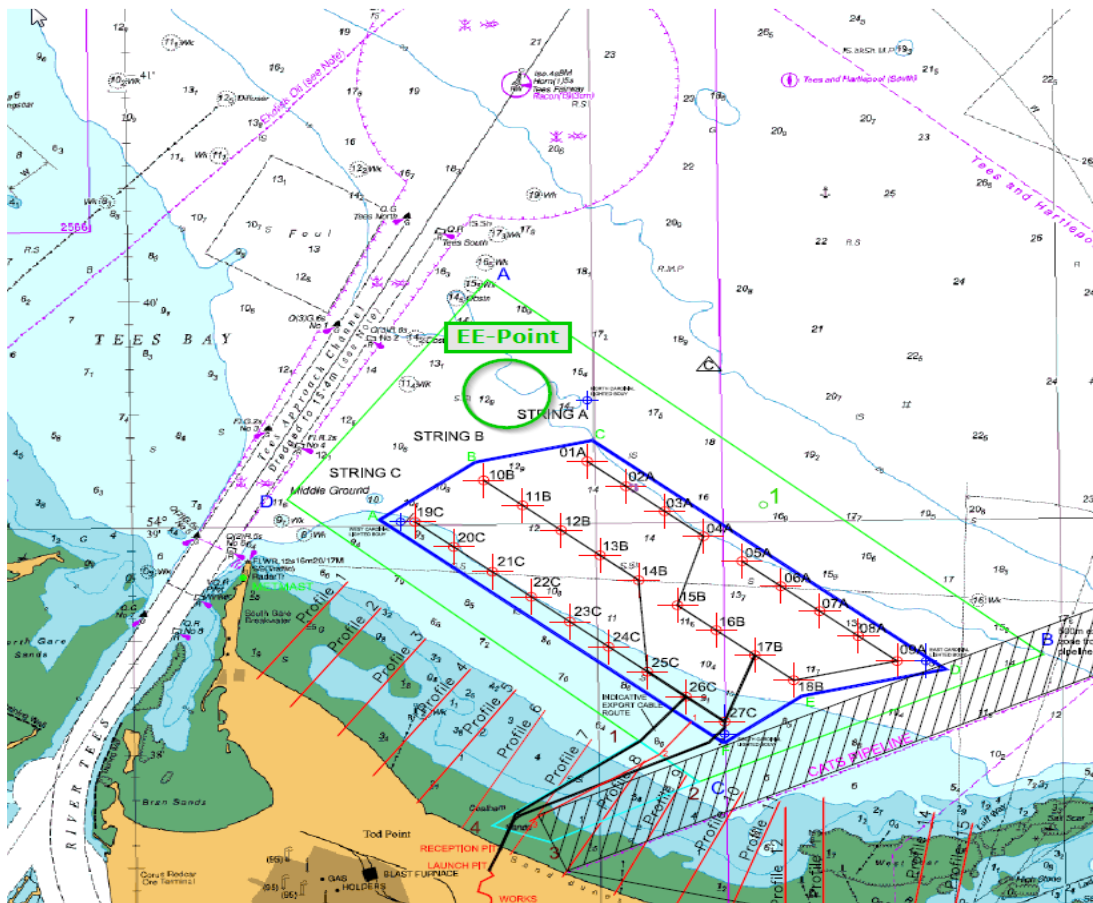


## Notice to Marine Users 2023 Teesside Offshore Wind Farm

27<sup>th</sup> November 2023

The vessel will make use of the designated entry/egress point as shown, marked with the green circle. As the project progresses this plan might change, and marine users will be updated accordingly.

The adverse weather and standby position are the same as the entry/egress point. This is a floating standby position to be used if criteria are not met for positioning or jacking.



## Notice to Marine Users 2023 Teesside Offshore Wind Farm

27<sup>th</sup> November 2023

### Vessel Details:

Vessel Name Wind  
Call Sign OXSW2

Scope of Works Jack-up and bridge to turbines  
**8A,09A,15B,17B,24C,27C**

Duration 6 to 8 days per turbine (weather permitting)

Operational Parameters Vessel will be present 24 hours per day and working time will be 12 hours per day. A 500m exclusion zone around the vessel and turbine is requested at all times.

