

PD TEESPORT LTD

CHANNEL SHOALING NOTE

Issued by the Harbour Master on 27th November 2023

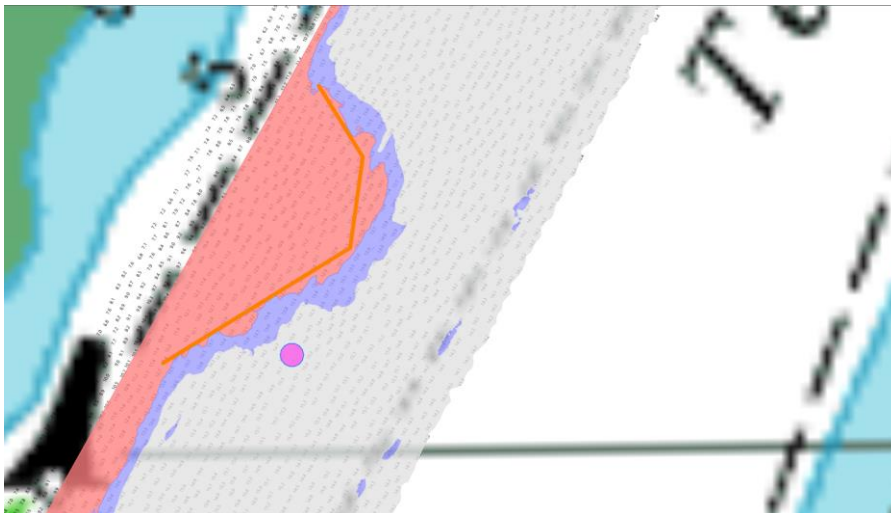
A bank slippage has occurred between No. 9 and No. 11 Buoys with depths of less than 12.5m up to 56m into the channel. The limit of this area of shoaling can be shown by a line joining the following positions:

54° 38.085'N, 1° 09.421'W
 54° 38.068'N, 1° 09.404'W
 54° 38.048'N, 1° 09.410'W
 54° 38.022'N, 1° 09.484'W

A winker buoy has been deployed at the extremities of the bank slippage area, to mark the area of reduced depth.

Winker Buoy specification: -

Light Character: QG
 Position: 54° 38.023'N , 1° 09.433'W



The winker buoy will remain in place for the duration of the dredging.

With the winker buoy in place the following draught formulae may be used:

Berth	Draught Formula	Least Depth
ConocoPhillips No.1 Jetty	11.5m	12.4m
Redcar Bulk Terminal	11.5m	12.4m
ConocoPhillips No.4 Jetty (Departure Only)	10.7m	11.6m
ConocoPhillips No.5 Jetty (Departure Only)	10.7m	11.6m

The Weekly Navigation Bulletin has been updated accordingly.

HARBOUR MASTER