



Notice to Marine Users 2021

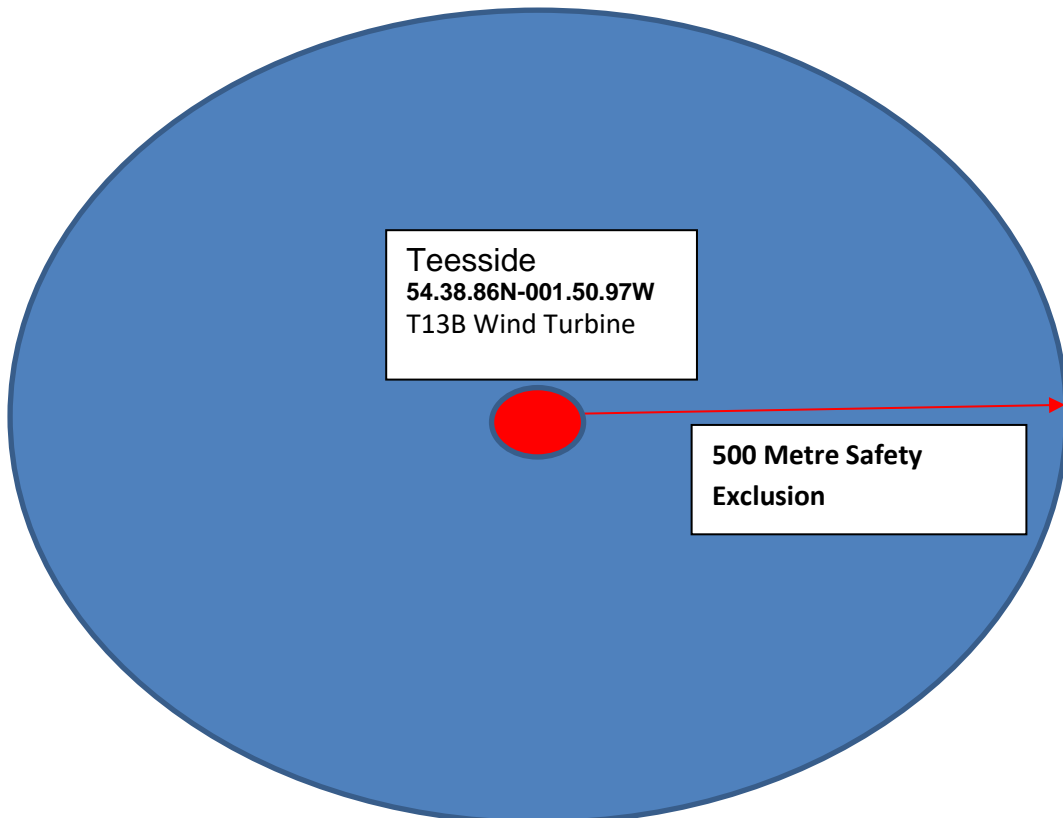
26th of August 2021

**Teesside Offshore windfarm
Important Notice to All Marine Users**

Planned Gearbox exchange on wind turbine 13B with assistance of a jack-up vessel-WIND

A gearbox exchange is planned to commence within the boundaries of the Teesside offshore wind farm with the assistance of the Wind jack-up vessel. The works will involve removal of the existing gearbox at turbine 13B and installation of a new one. Anticipated duration of work at the turbine will take 6 to 8 days depending on the turbine status and weather conditions. **We plan for the works to commence on the 29th of August depending on weather conditions**

For safety reasons there will be a 500m exclusion zone around the radius of turbine 13B shown below



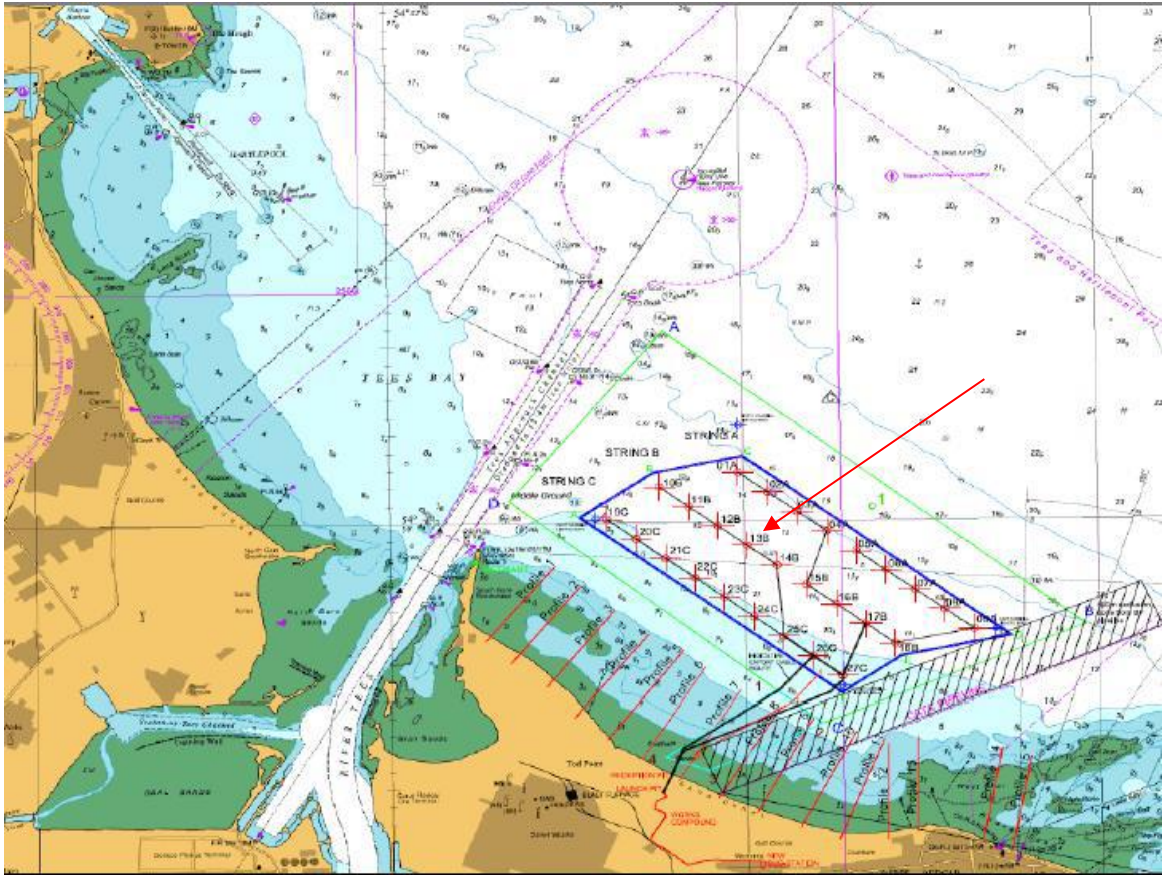
Notice to Marine Users 2021

26th of August 2021

Teesside Offshore Wind Farm

Turbine 13B is located at the following coordinates and indicated on the below diagram.

WGS 84 COORDINATES
54.38.86N-001.50.97W





Notice to Marine Users 2021 Teesside Offshore Wind Farm

26th of August 2021

Vessel Details:

Vessel Name Wind
Call Sign OXSW2

Scope of Works Jack-up and bridge to turbine
13B

Duration 6 to 8 days (weather permitting)

Operational Parameters Vessel will be present 24 hours per day and working time will be 12 hours per day. A 500m exclusion zone around the vessel and turbine is requested at all times.

