

NOTICE TO MARINERS

DOGGER BANK OFFSHORE WIND FARM

DATE OF ISSUE:	01/07/2021
NOTICE TO MARINERS NUMBER	LF700013-MIP-DOG-NOT-0004

Dogger Bank C, Export Cable Nearshore Survey

LOCATION DESCRIPTION		Marske Sands
COORDINATES WGS 84	Survey Area:	54° 36.806' N 001° 0.636' W 54° 36.272' N 000° 57.426' W 54° 35.510' N 000° 57.729' W 54° 36.212' N 001° 1.752' W
START DATE/TIME		12 th July 2021
ESTIMATED END DATE/TIME		31 st August 2021

Description of Hazard/Operation

The survey vessel **Marshall Art** will be undertaking geophysical survey works of the Dogger Bank C Export Cable landfall area, involving towed equipment up to 200m behind the vessel. The towed equipment will be submerged with no surface markings.


During the operations the vessel will be restricted in its ability to manoeuvre and will display the appropriate day shapes and lights. Passing vessels are requested to maintain a minimum 500m safety distance from **Marshall Art** during operations, reducing speed to minimise wake disturbance.

Contact Details

MARINE COORDINATION CONTACT	John Bray John.bray@sse.com
FLO CONTACT	John Watt- Brown & May Marine Ltd John.watt@brownmay.com Tel: 01379 870181 Mob: 07590880746 Zoe Lawrence - Brown & May Marine Ltd zoe@brownmay.com Mob: 07923 138175
CONTRACTOR CONTACT	Richard Hamilton Richard.hamilton@sandgeophysics.com 0770 33 99 563

NOTICE TO MARINERS

Supporting Information

Vessel – Marshall Art		Contact Details	
	Call Sign	2EMY5	
	MMSI	235086495	
	IMO	n/a	
	Vessel Details		Length
	Beam	6m	
	Draft	1.7m	

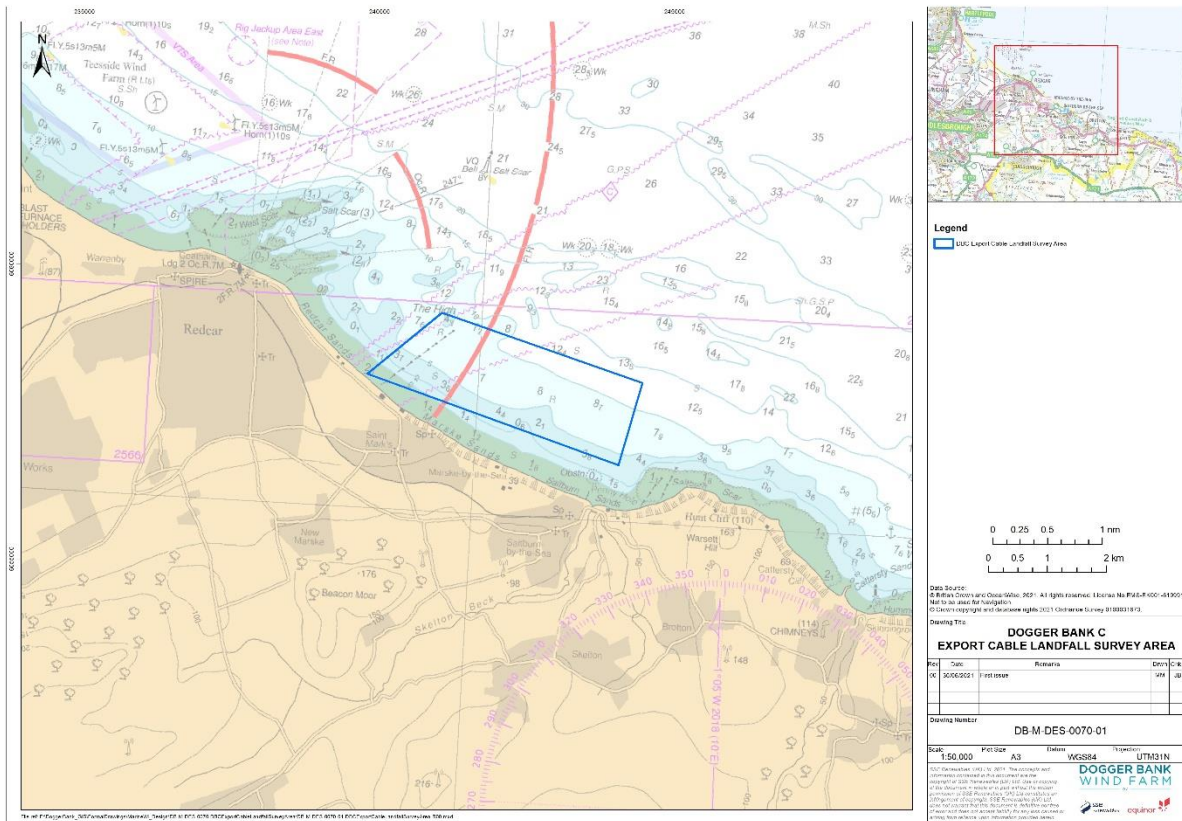


Fig 1 Location Chart