

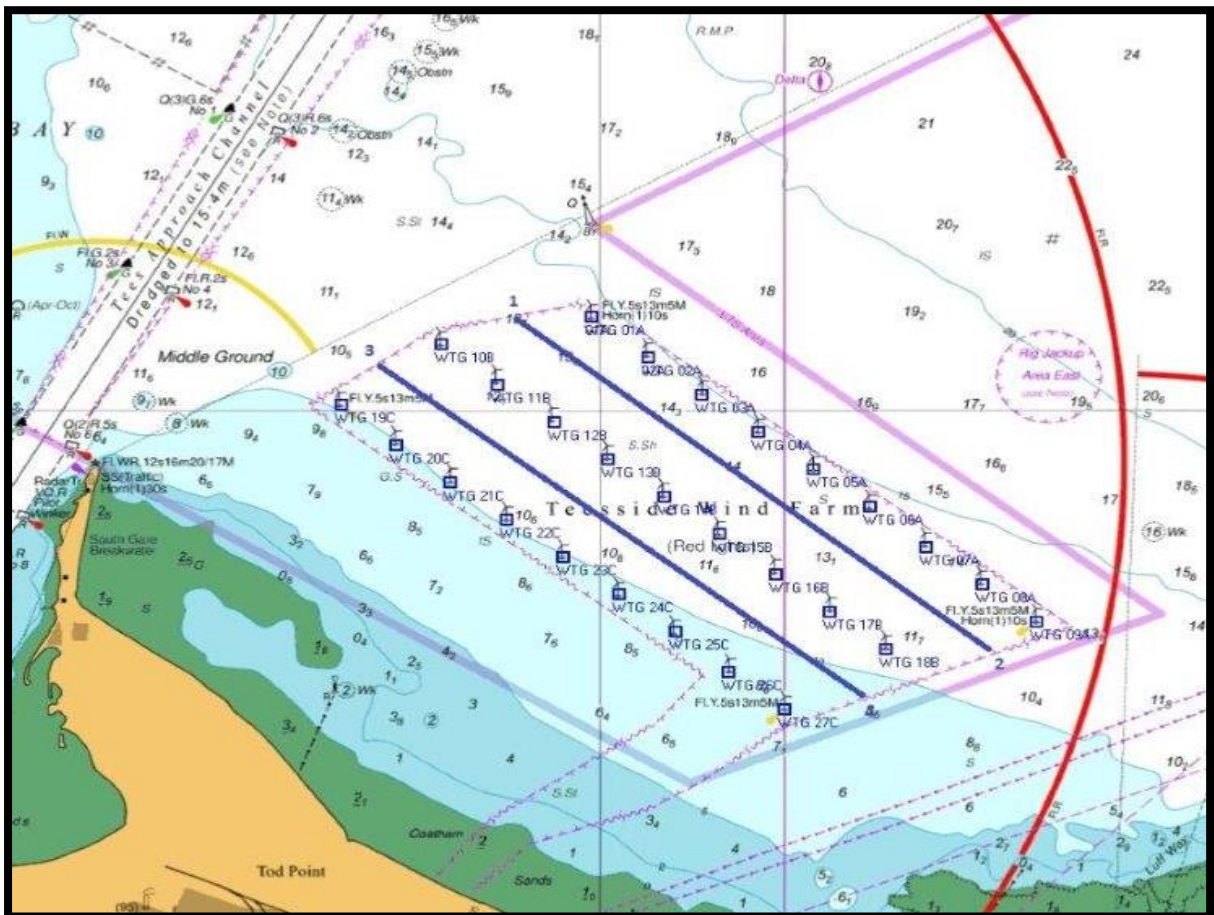
Notice to Marine Users 2021 Teesside Offshore Wind Farm

17 June 2021

Important Notice to All Marine Users

A gearbox and hydraulic system oil exchange is planned to commence within the boundaries of the Teesside Offshore Wind Farm, on each turbine, within the duration of the working period, with the assistance of the vessel MMS Superior.

Anticipated duration of work will be 16-18 days, depending on the turbine status and weather conditions. We plan for the works to commence on 28th June depending on weather conditions.

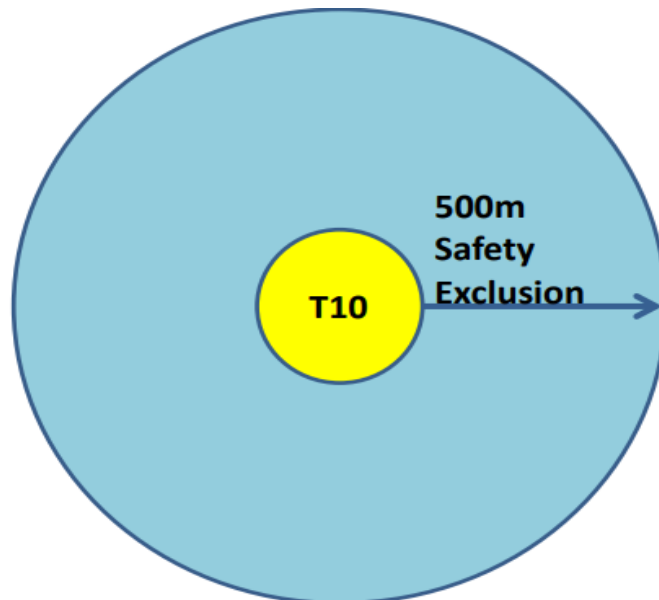


Teesside Offshore Windfarm

**Notice to Marine Users 2021
Teesside Offshore Wind Farm**

17 June 2021

For safety reasons there will be a 500m exclusion zone around the radius of turbine being worked on.



Example of 500 metre exclusion zone around a turbine

vessel Details

Vessel Name	MMS Superior
Call Sign	MGFO9
Contact Information	mmssuperior@mms-offshore.co.uk
Scope of Works	Oil exchange
Duration	16-18 days weather dependant
Operational Parameters	Vessel working time will be 12 hours per day, weather dependant. A 500m exclusion zone around the vessel and turbine is requested at all times



**Notice to Marine Users 2021
Teesside Offshore Wind Farm**

17 June 2021



If further information is required please liaise directly with EDF Renewables Marine Coordination based at Teesside, mcc@edf-re.uk +44 (0)131 377 0002